

- NOTES:**
1. GRINDER PUMP MUST BE LOCATED A MINIMUM OF 10 FT. FROM STRUCTURE.
  2. BUILDING SEWER SHALL BE CONSTRUCTED IN ACCORDANCE WITH DEP GUIDELINES, TOWNSHIP RULES AND REGS., AND INTERNATIONAL PLUMBING CODES.
  3. CONTRACTOR TO COORDINATE LOCATION OF GRINDER PUMP UNIT AND CONTROL PANEL WITH PROPERTY OWNER. FOR MAINTENANCE PURPOSES, THE GRINDER PUMP CONTROL PANEL SHALL BE VISIBLE FROM PUBLIC ROAD.
  4. DISTANCE BETWEEN DWELLING AND PRESSURE LATERAL SHALL BE 5' MINIMUM, OR AS REQUIRED BY LOCAL CODES, ORDINANCES, RULES AND REGULATIONS OF GOVERNING SERVICE AUTHORITY.

## GRINDER PUMP INSTALLATION SCHEMATIC

NOT TO SCALE

THE DETAILS ON THIS SHEET PRESENT THE MINIMUM REQUIREMENTS FOR THE CONSTRUCTION OF WASTEWATER COLLECTION FACILITIES WHICH ARE TO CONVEY WASTEWATER TO AND THROUGH THE FAIRCHANCE - GEORGES JOINT MUNICIPAL SEWAGE AUTHORITY'S COLLECTION, CONVEYANCE AND TREATMENT SYSTEM. THE SITE DEVELOPER'S DESIGN ENGINEER UTILIZING THESE DETAILS SHALL REVIEW THE DETAILS AND PRESENT ANY MODIFICATIONS NECESSITATED BY SITE CONDITIONS TO THE AUTHORITY FOR REVIEW. THE AUTHORITY NEITHER WARRANTS NOR GUARANTEES THAT THE DETAILS PRESENTED HEREIN ARE APPLICABLE TO ALL SITE CONDITIONS. THE USE OF THIS SHEET IN THE PROJECT'S CONSTRUCTION DOCUMENTS SHALL SIGNIFY THAT THE SITE DEVELOPER'S DESIGN ENGINEER HAS REVIEWED THE DETAILS AND FOUND THEM ACCEPTABLE FOR THE PROJECT.

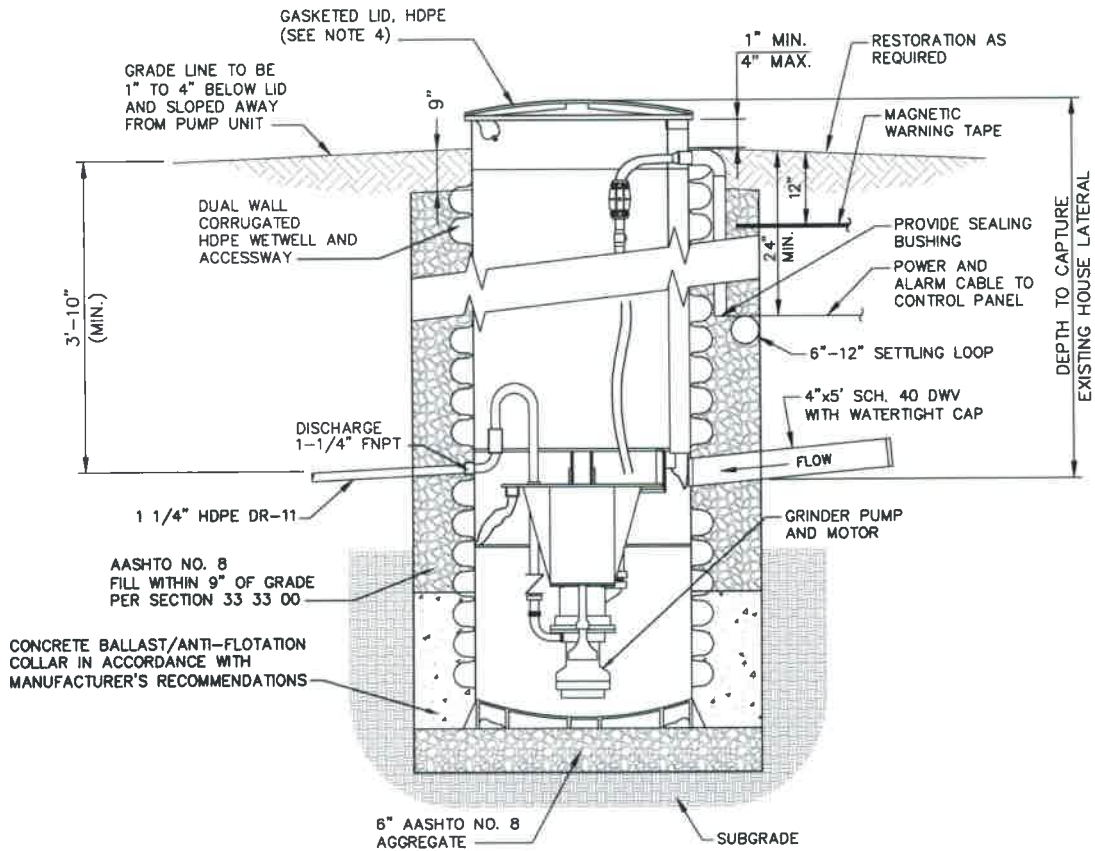
**HRG**  
 Herbert Rowland & Grubic, Inc.  
 Engineering & Related Services  
 AN EMPLOYEE-OWNED COMPANY

200 West Kensington Drive, Suite 400  
 Cranberry Township, PA 16064  
 (724) 779-4777  
 Fax (724) 779-4711  
 hrge@hrge-inc.com  
 www.hrge-inc.com

**FAIRCHANCE - GEORGES JOINT  
 MUNICIPAL SEWAGE AUTHORITY  
 STANDARD DETAILS**

PROJ. MGR. -	CEH
DESIGN -	CEH
CADD -	CRC
CHECKED -	
SCALE -	AS SHOWN
DATE -	FEB. 2016

DRAWING NO.
<b>DT-20</b>
PROJECT 004307.0000



- NOTES:**
1. FIELD JOINT REQUIRED FOR MODELS TALLER THAN 93"
  2. CONCRETE BALLAST SHALL NOT EXTEND ABOVE BOTTOM OF INFLUENT SEWER PIPE.
  3. CONTRACTOR TO COORDINATE DEPTH OF EXISTING HOUSE LATERAL SUCH THAT DEP GUIDELINES AND INTERNATIONAL PLUMBING CODES ARE MET.
  4. ALL GRINDER PUMPS LOCATED WITHIN THE 100 YEAR FLOOD PLAIN SHALL BE EQUIPPED WITH A WATERTIGHT LID AND EXTEND PVC VENT ABOVE 100 YEAR FLOODPLAIN AS REQUIRED BY MANUFACTURER.
  5. PROVIDE 4"x4" LATERAL MARKER WITH LATERAL DEPTH PERMANENTLY MARKED AT END OF LATERAL.

**RESIDENTIAL GRINDER PUMP DETAIL**

NOT TO SCALE

THE DETAILS ON THIS SHEET PRESENT THE MINIMUM REQUIREMENTS FOR THE CONSTRUCTION OF WASTEWATER COLLECTION FACILITIES WHICH ARE TO CONVEY WASTEWATER TO AND THROUGH THE FAIRCHANCE - GEORGES JOINT MUNICIPAL SEWAGE AUTHORITY'S COLLECTION, CONVEYANCE AND TREATMENT SYSTEM. THE SITE DEVELOPER'S DESIGN ENGINEER UTILIZING THESE DETAILS SHALL REVIEW THE DETAILS AND PRESENT ANY MODIFICATIONS NECESSITATED BY SITE CONDITIONS TO THE AUTHORITY FOR REVIEW. THE AUTHORITY NEITHER WARRANTS NOR GUARANTEES THAT THE DETAILS PRESENTED HEREIN ARE APPLICABLE TO ALL SITE CONDITIONS. THE USE OF THIS SHEET IN THE PROJECT'S CONSTRUCTION DOCUMENTS SHALL SIGNIFY THAT THE SITE DEVELOPER'S DESIGN ENGINEER HAS REVIEWED THE DETAILS AND FOUND THEM ACCEPTABLE FOR THE PROJECT.

File Name: P:\0043\004307\_0000\CAD\CAD\Fairchance - Georges Joint Municipal Sewerage Authority Details\0043070000\_DT.dwg Layout: DT-21 May 02, 2017 1:40pm nstoughton

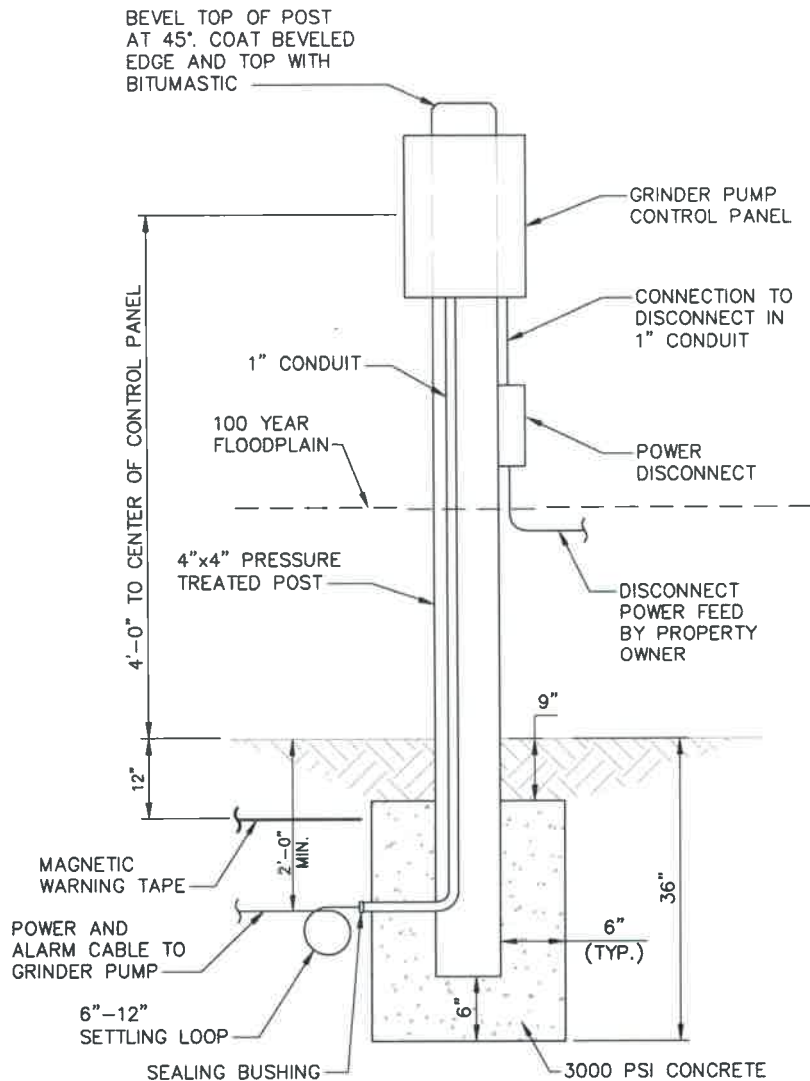


200 West Karstinger Drive, Suite 400  
Cranberry Township, PA 16066  
(724) 779-4777  
Fax (724) 779-4711  
hr@hrg-inc.com  
www.hrg-inc.com

FAIRCHANCE - GEORGES JOINT  
MUNICIPAL SEWAGE AUTHORITY  
STANDARD DETAILS

PROJ. MGR. - CEH
DESIGN - CEH
CADD - CRC
CHECKED -
SCALE - AS SHOWN
DATE - FEB. 2016

DRAWING NO.
<b>DT-21</b>
PROJECT 004307.0000



- NOTES:**
1. THE POWER AND ALARM CABLE OF GRINDER PUMPS LOCATED WITHIN THE 100 YEAR FLOOD PLAIN SHALL BE PLACED IN 1" PVC CONDUIT THE ENTIRE WAY BETWEEN THE GRINDER PUMP AND THE CONTROL PANEL

**RESIDENTIAL GRINDER PUMP CONTROL PANEL DETAIL**

NOT TO SCALE

THE DETAILS ON THIS SHEET PRESENT THE MINIMUM REQUIREMENTS FOR THE CONSTRUCTION OF WASTEWATER COLLECTION FACILITIES WHICH ARE TO CONVEY WASTEWATER TO AND THROUGH THE FAIRCHANCE - GEORGES JOINT MUNICIPAL SEWAGE AUTHORITY'S COLLECTION, CONVEYANCE AND TREATMENT SYSTEM. THE SITE DEVELOPER'S DESIGN ENGINEER UTILIZING THESE DETAILS SHALL REVIEW THE DETAILS AND PRESENT ANY MODIFICATIONS NECESSITATED BY SITE CONDITIONS TO THE AUTHORITY FOR REVIEW. THE AUTHORITY NEITHER WARRANTS NOR GUARANTEES THAT THE DETAILS PRESENTED HEREIN ARE APPLICABLE TO ALL SITE CONDITIONS. THE USE OF THIS SHEET IN THE PROJECT'S CONSTRUCTION DOCUMENTS SHALL SIGNIFY THAT THE SITE DEVELOPER'S DESIGN ENGINEER HAS REVIEWED THE DETAILS AND FOUND THEM ACCEPTABLE FOR THE PROJECT.

**HRG**  
 Herbert Rowland & Grubis, Inc.  
 Engineering & Related Services  
 AN EMPLOYEE-OWNED COMPANY

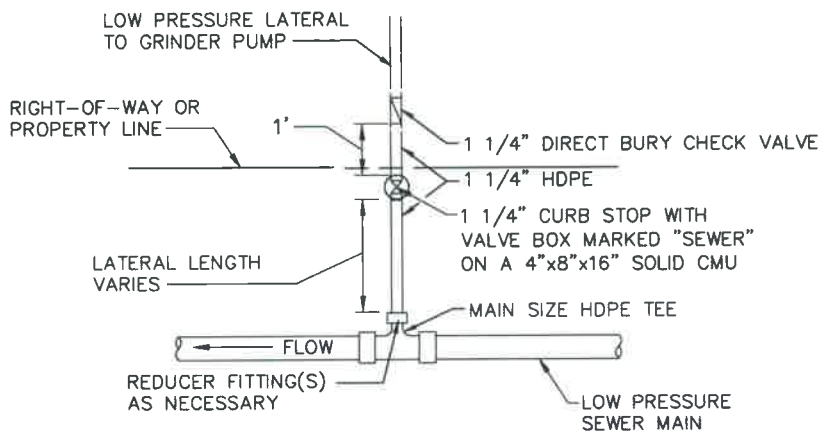
200 West Kearsinger Drive, Suite 400  
 Cranberry Township, PA 16066  
 (724) 779-4777  
 Fax (724) 779-4711  
 hrgh@hrg-inc.com  
 www.hrg-inc.com

**FAIRCHANCE - GEORGES JOINT  
 MUNICIPAL SEWAGE AUTHORITY  
 STANDARD DETAILS**

PROJ. MGR. -	CEH
DESIGN -	CEH
CADD -	CRC
CHECKED -	
SCALE -	AS SHOWN
DATE -	FEB. 2016

DRAWING NO.  
**DT-22**  
 PROJECT 004307.0000

P:\0043\004307\_0000\CADD\CADD\Standard Details\0043070000\_DT.dwg Layout:DT-22 May 05, 2017 11:41pm nstoughten



**NOTE:**

1. FUTURE LOW PRESSURE LATERAL CONNECTIONS SHALL HAVE A 3' MIN. HDPE STUB WITH WATERTIGHT CAP UPSTREAM OF THE CHECK VALVE AND MARKED WITH 4x4 TREATED POST.

**LOW PRESSURE LATERAL CONNECTION DETAIL**

NOT TO SCALE

File name: P:\04\04307\_0000\CAD\CivilSA - Standard Details\004-3070000\_DT.dwg Layout:01-23 May 05, 2017 11:53am mstinghton

THE DETAILS ON THIS SHEET PRESENT THE MINIMUM REQUIREMENTS FOR THE CONSTRUCTION OF WASTEWATER COLLECTION FACILITIES WHICH ARE TO CONVEY WASTEWATER TO AND THROUGH THE FAIRCHANCE - GEORGES JOINT MUNICIPAL SEWAGE AUTHORITY'S COLLECTION, CONVEYANCE AND TREATMENT SYSTEM. THE SITE DEVELOPER'S DESIGN ENGINEER UTILIZING THESE DETAILS SHALL REVIEW THE DETAILS AND PRESENT ANY MODIFICATIONS NECESSITATED BY SITE CONDITIONS TO THE AUTHORITY FOR REVIEW. THE AUTHORITY NEITHER WARRANTS NOR GUARANTEES THAT THE DETAILS PRESENTED HEREIN ARE APPLICABLE TO ALL SITE CONDITIONS. THE USE OF THIS SHEET IN THE PROJECT'S CONSTRUCTION DOCUMENTS SHALL SIGNIFY THAT THE SITE DEVELOPER'S DESIGN ENGINEER HAS REVIEWED THE DETAILS AND FOUND THEM ACCEPTABLE FOR THE PROJECT.



200 West Kearsinger Drive, Suite 400  
 Cranberry Township, PA 16066  
 (724) 779 - 4777  
 Fax (724) 779 - 4711  
 hrg@hrg-inc.com  
 www.hrg-inc.com

Herbert Rowland & Grubic, Inc.  
 Engineering & Related Services  
 AN EMPLOYEE-OWNED COMPANY

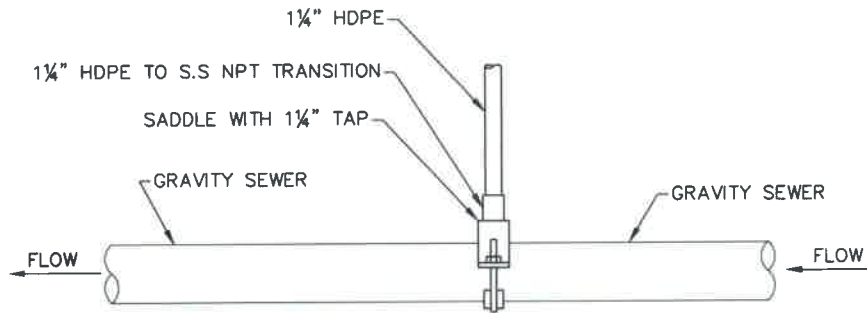
FAIRCHANCE - GEORGES JOINT  
 MUNICIPAL SEWAGE AUTHORITY  
 STANDARD DETAILS

PROJ. MGR. - CEH
DESIGN - CEH
CADD - CRC
CHECKED -
SCALE - AS SHOWN
DATE - FEB. 2016

DRAWING NO.

**DT-23**

PROJECT 004307.0000



**NOTES:**

1. REFER TO LPL CONNECTION DETAIL FOR CURB STOP AND CHECK VALVE REQUIREMENTS.

**LPL CONNECTION TO GRAVITY SEWER DETAIL**

NOT TO SCALE

THE DETAILS ON THIS SHEET PRESENT THE MINIMUM REQUIREMENTS FOR THE CONSTRUCTION OF WASTEWATER COLLECTION FACILITIES WHICH ARE TO CONVEY WASTEWATER TO AND THROUGH THE FAIRCHANCE - GEORGES JOINT MUNICIPAL SEWAGE AUTHORITY'S COLLECTION, CONVEYANCE AND TREATMENT SYSTEM. THE SITE DEVELOPER'S DESIGN ENGINEER UTILIZING THESE DETAILS SHALL REVIEW THE DETAILS AND PRESENT ANY MODIFICATIONS NECESSITATED BY SITE CONDITIONS TO THE AUTHORITY FOR REVIEW. THE AUTHORITY NEITHER WARRANTS NOR GUARANTEES THAT THE DETAILS PRESENTED HEREIN ARE APPLICABLE TO ALL SITE CONDITIONS. THE USE OF THIS SHEET IN THE PROJECT'S CONSTRUCTION DOCUMENTS SHALL SIGNIFY THAT THE SITE DEVELOPER'S DESIGN ENGINEER HAS REVIEWED THE DETAILS AND FOUND THEM ACCEPTABLE FOR THE PROJECT.

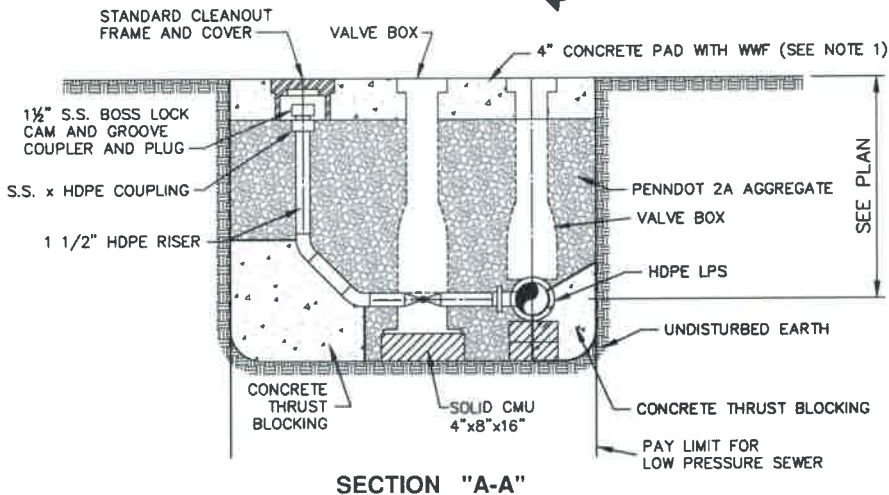
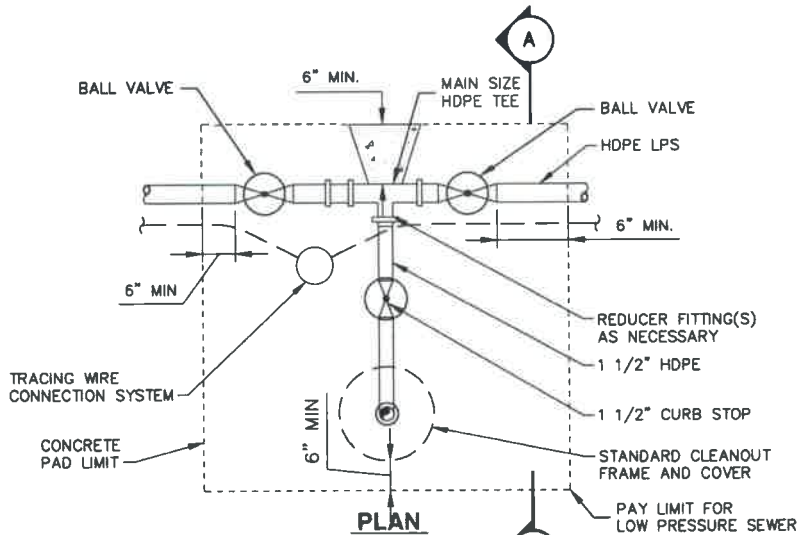


200 West Kersinger Drive, Suite 400  
 Cranberry Township, PA 16066  
 (724) 779 - 4777  
 Fax (724) 779 - 4711  
 hrgh@hrgh-inc.com  
 www.hrgh-inc.com

**FAIRCHANCE - GEORGES JOINT  
 MUNICIPAL SEWAGE AUTHORITY  
 STANDARD DETAILS**

PROJ. MGR. -	CEH
DESIGN -	CEH
CADD -	CRC
CHECKED -	
SCALE -	AS SHOWN
DATE -	FEB. 2016

DRAWING NO.
<b>DT-24</b>
PROJECT 004.307.0000



- NOTES:**
1. WHERE CLEANOUT IS INSTALLED IN PAVED AREAS, DELETE CONCRETE PAD AND RESTORE PAVEMENT IN ACCORDANCE WITH CONTRACT DOCUMENTS.

**LPS IN-LINE CLEANOUT DETAIL**

NOT TO SCALE

THE DETAILS ON THIS SHEET PRESENT THE MINIMUM REQUIREMENTS FOR THE CONSTRUCTION OF WASTEWATER COLLECTION FACILITIES WHICH ARE TO CONVEY WASTEWATER TO AND THROUGH THE FAIRCHANCE - GEORGES JOINT MUNICIPAL SEWAGE AUTHORITY'S COLLECTION, CONVEYANCE AND TREATMENT SYSTEM. THE SITE DEVELOPER'S DESIGN ENGINEER UTILIZING THESE DETAILS SHALL REVIEW THE DETAILS AND PRESENT ANY MODIFICATIONS NECESSITATED BY SITE CONDITIONS TO THE AUTHORITY FOR REVIEW. THE AUTHORITY NEITHER WARRANTS NOR GUARANTEES THAT THE DETAILS PRESENTED HEREIN ARE APPLICABLE TO ALL SITE CONDITIONS. THE USE OF THIS SHEET IN THE PROJECT'S CONSTRUCTION DOCUMENTS SHALL SIGNIFY THAT THE SITE DEVELOPER'S DESIGN ENGINEER HAS REVIEWED THE DETAILS AND FOUND THEM ACCEPTABLE FOR THE PROJECT.

**HRG**  
 Herbert Rowland & Grubis, Inc.  
 Engineering & Related Services  
 AN EMPLOYEE-OWNED COMPANY

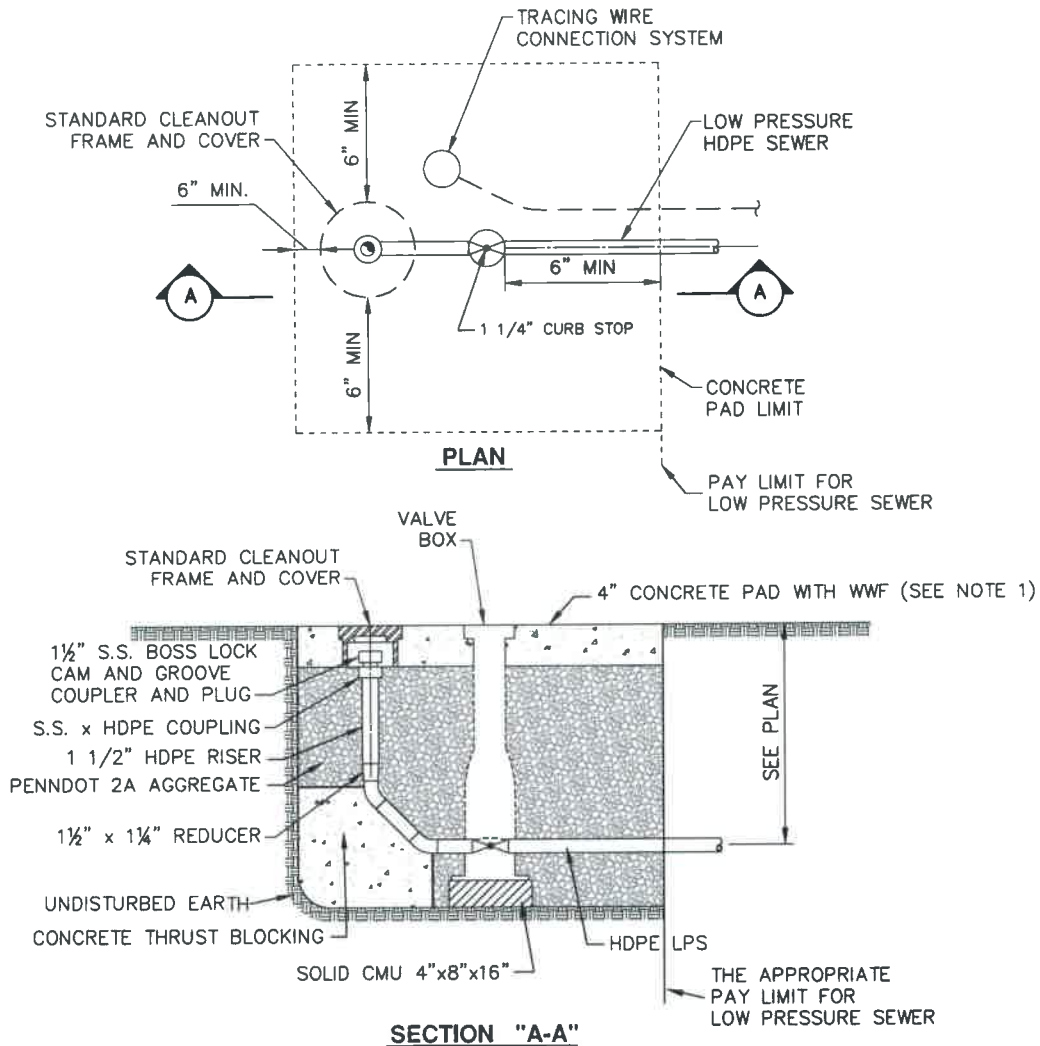
200 West Kensington Drive, Suite 400  
 Cranberry Township, PA 16066  
 (724) 779-4777  
 Fax (724) 779-4711  
 hrg@hrg-inc.com  
 www.hrg-inc.com

**FAIRCHANCE - GEORGES JOINT  
 MUNICIPAL SEWAGE AUTHORITY  
 STANDARD DETAILS**

PROJ. MGR. - CEH
DESIGN - CEH
CADD - CRC
CHECKED -
SCALE - AS SHOWN
DATE - FEB. 2016

DRAWING NO.  
**DT-25**  
 PROJECT 004.307.0000

File name: P:\0043\004307\_0000\CS\Y\G\USA - Standard Details\0043070000\_DT.dwg Layout: DT-25 May 05, 2017 - 2:32pm rrt@roton.com



- NOTES:**
- WHERE CLEANOUT IS INSTALLED IN PAVED AREAS, DELETE CONCRETE PAD AND RESTORE PAVEMENT IN ACCORDANCE WITH CONTRACT PAVEMENT RESTORATION DETAIL

**LPS TERMINAL CLEANOUT DETAIL**

NOT TO SCALE

THE DETAILS ON THIS SHEET PRESENT THE MINIMUM REQUIREMENTS FOR THE CONSTRUCTION OF WASTEWATER COLLECTION FACILITIES WHICH ARE TO CONVEY WASTEWATER TO AND THROUGH THE FAIRCHANCE - GEORGES JOINT MUNICIPAL SEWAGE AUTHORITY'S COLLECTION, CONVEYANCE AND TREATMENT SYSTEM. THE SITE DEVELOPER'S DESIGN ENGINEER UTILIZING THESE DETAILS SHALL REVIEW THE DETAILS AND PRESENT ANY MODIFICATIONS NECESSITATED BY SITE CONDITIONS TO THE AUTHORITY FOR REVIEW. THE AUTHORITY NEITHER WARRANTS NOR GUARANTEES THAT THE DETAILS PRESENTED HEREIN ARE APPLICABLE TO ALL SITE CONDITIONS. THE USE OF THIS SHEET IN THE PROJECT'S CONSTRUCTION DOCUMENTS SHALL SIGNIFY THAT THE SITE DEVELOPER'S DESIGN ENGINEER HAS REVIEWED THE DETAILS AND FOUND THEM ACCEPTABLE FOR THE PROJECT.

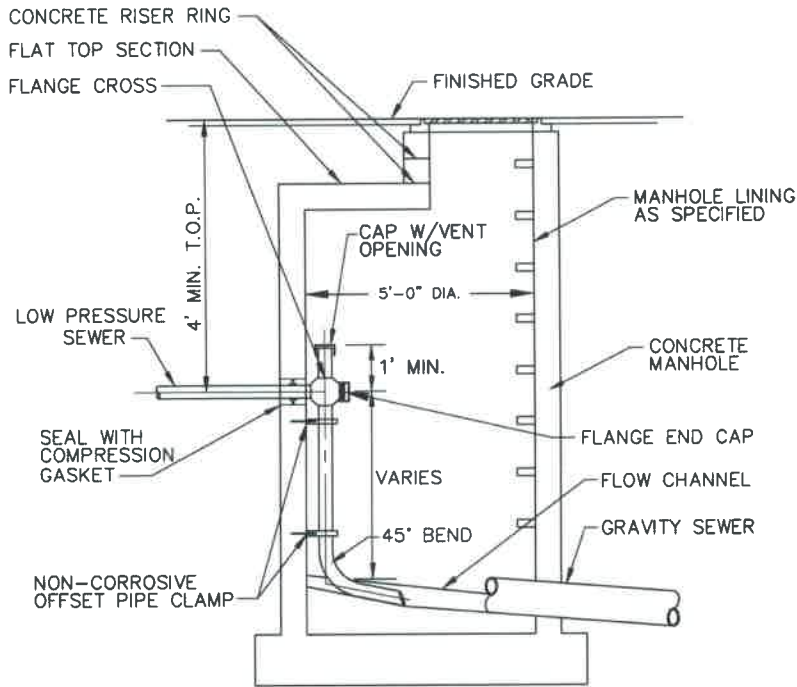
**HRG**  
 Herbert Rowland & Grubic, Inc.  
 Engineering & Related Services  
 AN EMPLOYEE-OWNED COMPANY

200 West Karstinger Drive, Suite 400  
 Cranberry Township, PA 16066  
 (724) 779-4777  
 Fax (724) 779-4711  
 hrghrg@hrg-inc.com  
 www.hrg-inc.com

**FAIRCHANCE - GEORGES JOINT  
 MUNICIPAL SEWAGE AUTHORITY  
 STANDARD DETAILS**

PROJ. MGR. -	CEH
DESIGN -	CEH
CADD -	CRC
CHECKED -	
SCALE -	AS SHOWN
DATE -	FEB. 2016

DRAWING NO.
<b>DT-26</b>
PROJECT 004.307.0000



## LOW PRESSURE FORCE MAIN DISCHARGE MANHOLE

NOT TO SCALE

THE DETAILS ON THIS SHEET PRESENT THE MINIMUM REQUIREMENTS FOR THE CONSTRUCTION OF WASTEWATER COLLECTION FACILITIES WHICH ARE TO CONVEY WASTEWATER TO AND THROUGH THE FAIRCHANCE - GEORGES JOINT MUNICIPAL SEWAGE AUTHORITY'S COLLECTION, CONVEYANCE AND TREATMENT SYSTEM. THE SITE DEVELOPER'S DESIGN ENGINEER UTILIZING THESE DETAILS SHALL REVIEW THE DETAILS AND PRESENT ANY MODIFICATIONS NECESSITATED BY SITE CONDITIONS TO THE AUTHORITY FOR REVIEW. THE AUTHORITY NEITHER WARRANTS NOR GUARANTEES THAT THE DETAILS PRESENTED HEREIN ARE APPLICABLE TO ALL SITE CONDITIONS. THE USE OF THIS SHEET IN THE PROJECT'S CONSTRUCTION DOCUMENTS SHALL SIGNIFY THAT THE SITE DEVELOPER'S DESIGN ENGINEER HAS REVIEWED THE DETAILS AND FOUND THEM ACCEPTABLE FOR THE PROJECT.

**HRG**  
 Herbert Rowland & Grubb, Inc.  
 Engineering & Related Services  
 AN EMPLOYEE-OWNED COMPANY

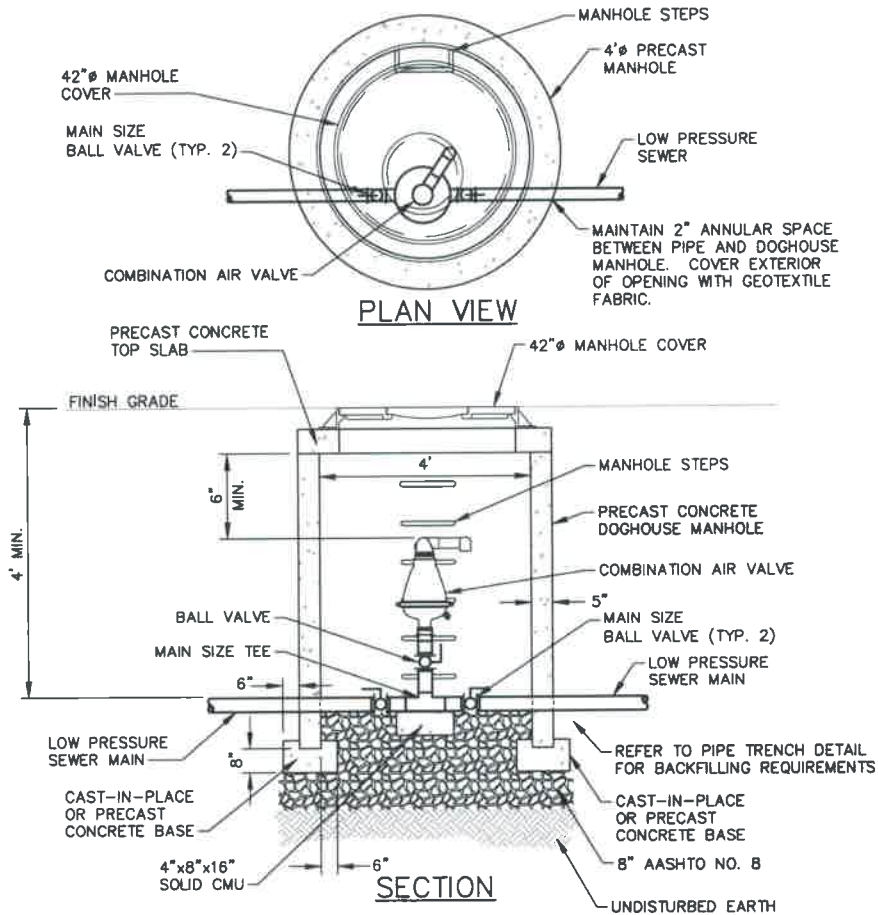
200 West Kerstinger Drive, Suite 400  
 Cranberry Township, PA 16066  
 (724) 779-4777  
 Fax (724) 779-4711  
 hrg@hrg-inc.com  
 www.hrg-inc.com

FAIRCHANCE - GEORGES JOINT  
 MUNICIPAL SEWAGE AUTHORITY  
 STANDARD DETAILS

PROJ. MGR. -	CEH
DESIGN -	CEH
CADD -	CRC
CHECKED -	
SCALE -	AS SHOWN
DATE -	FEB. 2016

DRAWING NO.
<b>DT-27</b>
PROJECT 004.307.0000





**NOTES:**

1. CONTRACTOR SHALL USE DOGHOUSE MANHOLES FOR ALL NEW COMBINATION AIR VALVE INSTALLATIONS.
2. CONTRACTOR TO COORDINATE THE DEPTH OF THE LOW PRESSURE SEWERS AT THE AIR RELEASE VALVE MANHOLE TO ENSURE CLEARANCES ARE MET AND THE LOCATION IS AT THE HIGH POINT.
3. CONTRACTOR TO PROVIDE CLAMPS/BRACES AS NECESSARY TO SUPPORT CAV ASSEMBLY. ATTACH CLAMPS/BRACES TO MANHOLE AS NECESSARY.
4. SEE PENNDOT PUBLICATIONS 72M, RC-39M FOR ADDITIONAL DETAILS.

**AIR RELEASE VALVE MANHOLE - LOW PRESSURE SEWER**

NOT TO SCALE

THE DETAILS ON THIS SHEET PRESENT THE MINIMUM REQUIREMENTS FOR THE CONSTRUCTION OF WASTEWATER COLLECTION FACILITIES WHICH ARE TO CONVEY WASTEWATER TO AND THROUGH THE FAIRCHANCE - GEORGES JOINT MUNICIPAL SEWAGE AUTHORITY'S COLLECTION, CONVEYANCE AND TREATMENT SYSTEM. THE SITE DEVELOPER'S DESIGN ENGINEER UTILIZING THESE DETAILS SHALL REVIEW THE DETAILS AND PRESENT ANY MODIFICATIONS NECESSITATED BY SITE CONDITIONS TO THE AUTHORITY FOR REVIEW. THE AUTHORITY NEITHER WARRANTS NOR GUARANTEES THAT THE DETAILS PRESENTED HEREIN ARE APPLICABLE TO ALL SITE CONDITIONS. THE USE OF THIS SHEET IN THE PROJECT'S CONSTRUCTION DOCUMENTS SHALL SIGNIFY THAT THE SITE DEVELOPER'S DESIGN ENGINEER HAS REVIEWED THE DETAILS AND FOUND THEM ACCEPTABLE FOR THE PROJECT.

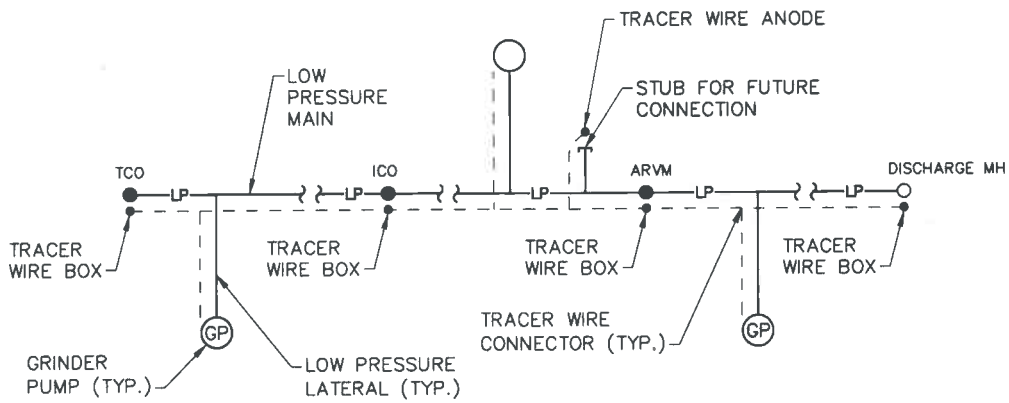
**HRG**  
 Herbert Rowland & Grubb, Inc.  
 Engineering & Related Services  
 AN EMPLOYER-OWNED COMPANY

200 West Karstinger Drive, Suite 400  
 Cranberry Township, PA 16066  
 (724) 779-4777  
 Fax (724) 779-4711  
 hrghrg@hrg-inc.com  
 www.hrg-inc.com

**FAIRCHANCE - GEORGES JOINT  
 MUNICIPAL SEWAGE AUTHORITY  
 STANDARD DETAILS**

PROJ. MGR. -	CEH
DESIGN -	CEH
CADD -	CRC
CHECKED -	
SCALE -	AS SHOWN
DATE -	FEB. 2016

DRAWING NO.
<b>DT-28</b>
PROJECT 004.307.0000



## TRACER WIRE SCHEMATIC - LOW PRESSURE SEWER

NOT TO SCALE

THE DETAILS ON THIS SHEET PRESENT THE MINIMUM REQUIREMENTS FOR THE CONSTRUCTION OF WASTEWATER COLLECTION FACILITIES WHICH ARE TO CONVEY WASTEWATER TO AND THROUGH THE FAIRCHANCE - GEORGES JOINT MUNICIPAL SEWAGE AUTHORITY'S COLLECTION, CONVEYANCE AND TREATMENT SYSTEM. THE SITE DEVELOPER'S DESIGN ENGINEER UTILIZING THESE DETAILS SHALL REVIEW THE DETAILS AND PRESENT ANY MODIFICATIONS NECESSITATED BY SITE CONDITIONS TO THE AUTHORITY FOR REVIEW. THE AUTHORITY NEITHER WARRANTS NOR GUARANTEES THAT THE DETAILS PRESENTED HEREIN ARE APPLICABLE TO ALL SITE CONDITIONS. THE USE OF THIS SHEET IN THE PROJECT'S CONSTRUCTION DOCUMENTS SHALL SIGNIFY THAT THE SITE DEVELOPER'S DESIGN ENGINEER HAS REVIEWED THE DETAILS AND FOUND THEM ACCEPTABLE FOR THE PROJECT.

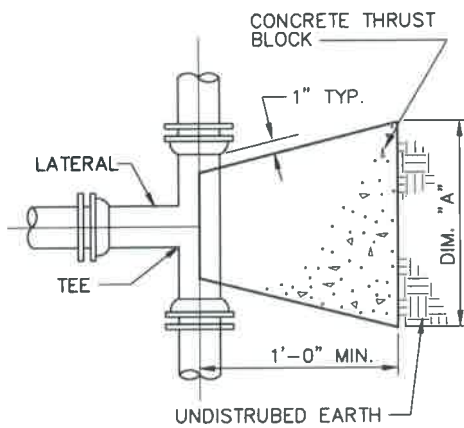


200 West Kersinger Drive, Suite 400  
Cranberry Township, PA 16066  
(724) 779-4777  
Fax (724) 779-4711  
hrg@hrg-inc.com  
www.hrg-inc.com

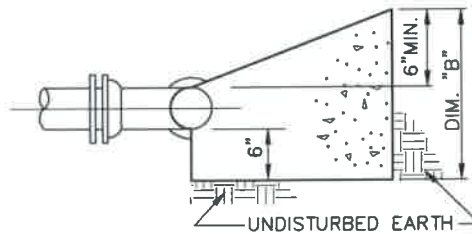
**FAIRCHANCE - GEORGES JOINT  
MUNICIPAL SEWAGE AUTHORITY  
STANDARD DETAILS**

PROJ. MGR. -	CEH
DESIGN -	CEH
CADD -	CRC
CHECKED -	
SCALE -	AS SHOWN
DATE -	FEB. 2016

DRAWING NO.
<b>DT-29</b>
PROJECT 004307.0000



PLAN



SECTION

**HORIZONTAL THRUST BLOCK DETAILS**  
**(LOW PRESSURE SEWERS)**

NOT TO SCALE

TEE DIMENSION SCHEDULE				
LATERAL SIZE				
DIM.	1 1/2"	2"	2 1/2"	3"
A	14"	16"	18"	20"
B	14"	14"	15"	15"

THE DETAILS ON THIS SHEET PRESENT THE MINIMUM REQUIREMENTS FOR THE CONSTRUCTION OF WASTEWATER COLLECTION FACILITIES WHICH ARE TO CONVEY WASTEWATER TO AND THROUGH THE FAIRCHANCE - GEORGES JOINT MUNICIPAL SEWAGE AUTHORITY'S COLLECTION, CONVEYANCE AND TREATMENT SYSTEM. THE SITE DEVELOPER'S DESIGN ENGINEER UTILIZING THESE DETAILS SHALL REVIEW THE DETAILS AND PRESENT ANY MODIFICATIONS NECESSITATED BY SITE CONDITIONS TO THE AUTHORITY FOR REVIEW. THE AUTHORITY NEITHER WARRANTS NOR GUARANTEES THAT THE DETAILS PRESENTED HEREIN ARE APPLICABLE TO ALL SITE CONDITIONS. THE USE OF THIS SHEET IN THE PROJECT'S CONSTRUCTION DOCUMENTS SHALL SIGNIFY THAT THE SITE DEVELOPER'S DESIGN ENGINEER HAS REVIEWED THE DETAILS AND FOUND THEM ACCEPTABLE FOR THE PROJECT.

File name: P:\0043\004307\_0000\CAD\CGM\SA Standard Details\0043070000\_DT.dwg Ltpueldt1-30 May 05, 2017 11:47pm nstn@hrinc



200 West Kershinger Drive, Suite 400  
Cranberry Township, PA 16066  
(724) 779-4777  
Fax (724) 779-4711  
hr@hrg-inc.com  
www.hrg-inc.com

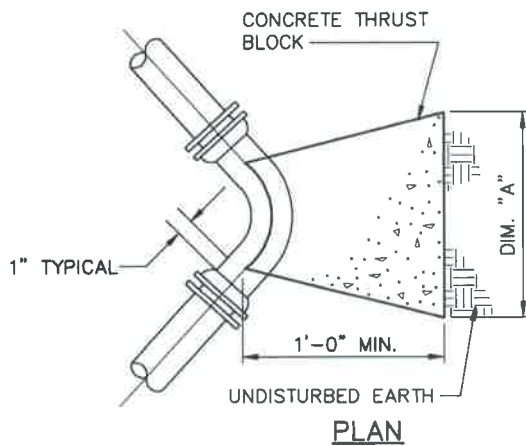
**FAIRCHANCE - GEORGES JOINT  
MUNICIPAL SEWAGE AUTHORITY  
STANDARD DETAILS**

PROJ. MGR. -	CEH
DESIGN -	CEH
CADD -	CRC
CHECKED -	
SCALE -	AS SHOWN
DATE -	FEB. 2016

DRAWING NO.

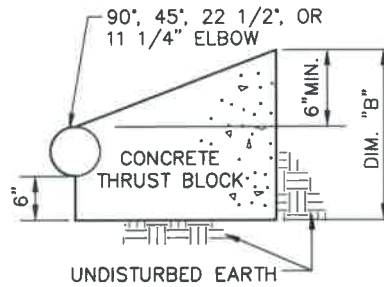
**DT-30**

PROJECT 004307.0000



ELBOW DIMENSION SCHEDULE										
DIM.	3"-90°	2 1/2"-90°	2"-90°	1 1/2"-90°	3"-45°	2 1/2"-45°	2"-45°	1 1/2"-45°	3"-22 1/2°	2 1/2"-22 1/2°
A	20	18	16	14	18	16	14	12	16	14
B	15	15	14	14	15	15	14	14	15	14

A & B DIMENSIONS ARE IN INCHES



SECTION

### HORIZONTAL THRUST BLOCK DETAILS (LOW PRESSURE SEWERS)

NOT TO SCALE

THE DETAILS ON THIS SHEET PRESENT THE MINIMUM REQUIREMENTS FOR THE CONSTRUCTION OF WASTEWATER COLLECTION FACILITIES WHICH ARE TO CONVEY WASTEWATER TO AND THROUGH THE FAIRCHANCE - GEORGES JOINT MUNICIPAL SEWAGE AUTHORITY'S COLLECTION, CONVEYANCE AND TREATMENT SYSTEM. THE SITE DEVELOPER'S DESIGN ENGINEER UTILIZING THESE DETAILS SHALL REVIEW THE DETAILS AND PRESENT ANY MODIFICATIONS NECESSITATED BY SITE CONDITIONS TO THE AUTHORITY FOR REVIEW. THE AUTHORITY NEITHER WARRANTS NOR GUARANTEES THAT THE DETAILS PRESENTED HEREIN ARE APPLICABLE TO ALL SITE CONDITIONS. THE USE OF THIS SHEET IN THE PROJECT'S CONSTRUCTION DOCUMENTS SHALL SIGNIFY THAT THE SITE DEVELOPER'S DESIGN ENGINEER HAS REVIEWED THE DETAILS AND FOUND THEM ACCEPTABLE FOR THE PROJECT.

File name: P:\0043\004307\_0000\CS3\Fairchance\_Standard\_Details\0043070000\_DT.dwg Layout: DT-31 May 03, 2017 - 11:47pm nntoupho

**HRG**  
Herbert Rowland & Grubb, Inc.  
Engineering & Related Services  
AN EMPLOYEE-OWNED COMPANY

200 West Kensingler Drive, Suite 400  
Cranberry Township, PA 16066  
(724) 779-4777  
Fax (724) 779-4711  
hrg@hrg-inc.com  
www.hrg-inc.com

FAIRCHANCE - GEORGES JOINT  
MUNICIPAL SEWAGE AUTHORITY  
STANDARD DETAILS

PROJ. MGR. -	CEH
DESIGN -	CEH
CADD -	CRC
CHECKED -	
SCALE -	AS SHOWN
DATE -	FEB. 2016

DRAWING NO.	<b>DT-31</b>
PROJECT	